



i-HETP: INCLUSIVE HIGHER EDUCATION TRAINING PROGRAM

Empowering Inclusive Education

Funded by the European Union. Views and opinions expressed are however those of the author(s) only and do not necessarily reflect those of the European Union or the European Education and Culture Executive Agency (EACEA). Neither the European Union nor EACEA can be held responsible for them.



Co-funded by
the European Union



Co-funded by
the European Union

INTRODUCTION TO I-HETP

The i-HETP (Inclusive Higher Education Training Program) project represents an innovative initiative in the context of higher education, outlined under the *Massive Open Online Course* (MOOC) modality. This program emerges as an assertive response to the needs of inclusion and accessibility in the academic environment, providing a unique opportunity for the professional and personal development of educators, students, and professionals with an interest in inclusive pedagogy.

Developed within the framework of the prestigious Erasmus+ KA2 project, i-HETP is the result of a transnational collaboration, involving renowned academic and research institutions in Portugal, Spain, Italy, Czech Republic, Poland, Romania, and Turkey. This intercultural and interdisciplinary cooperation gives the program a richness and diversity of perspectives and methodologies, establishing it as a milestone in training for inclusion in higher education.

The i-HETP platform offers a series of stand-alone modules, designed to allow users to register and register according to their specific interests and needs. This flexibility is one of the distinctive features of the program, allowing each participant to customize their learning path, adapting it to their own pace and time availability.

i-HETP's commitment to academic excellence and inclusion is reflected not only in the syllabus, but also in its pedagogical structure, which favors a student-centered approach, promoting interaction, digital accessibility and collaborative knowledge construction. Thus, i-HETP is not limited to being a mere vehicle for the transmission of information; It is, rather, a dynamic space for learning and exchange of experiences, aiming at the training of professionals capable of acting effectively and inclusively in the contemporary educational scenario.





Co-funded by
the European Union

CONTENT

The i-HETP program is structured in seven carefully designed modules, each dedicated to a crucial aspect of inclusive pedagogy and digital accessibility. The following is a detailed overview of each module available on the platform:



MODULE 1: Introduction to Inclusive Pedagogy and Digital Accessibility

This module serves as a foundation for the fundamental concepts of accessible education. It also addresses the importance of digital accessibility in the educational context, providing a way to improve the needs of students.



MODULE 2: Universal Design for Learning

Focused on Universal Design for Learning (UDL), this module presents a methodological approach that aims to create educational environments that are inclusive and adaptable to any student. It explores principles, practices, and applied examples of UDL, emphasizing the importance of providing multiple forms of representation, expression, and engagement.



MODULE 3: Pedagogical Methodologies for Students with Visual Impairments

Dedicated to specific strategies for the education of visually impaired students, this module offers an overview of techniques, resources and assistive technologies that facilitate access to knowledge and the active participation of such students in the educational process.



MODULE 4: Pedagogical Methodologies for Students with Hearing and/or Speech Impediments

This module focuses on pedagogical approaches for students with hearing and/or speech impediments. It addresses alternative and augmentative communication, assistive technologies, and teaching strategies that promote the effective inclusion of such students.





Co-funded by
the European Union

MODULE 5: Pedagogical Methodologies for Students with Physical Disabilities

Focused on students with physical disabilities, this module explores pedagogical strategies and technological resources that support the mobility, access and active participation of such students in the educational environment.



MODULE 6: Pedagogical Methodologies for Students with Intellectual and/or Specific Learning Disabilities

This module addresses specific inclusive strategies for students with intellectual disabilities and/or specific learning difficulties, highlighting approaches that promote understanding, knowledge retention and active participation.



MODULE 7: Pedagogical Methodologies for Students with Other Disabilities

The last module offers insights into pedagogical approaches tailored for students with a diverse range of other disabilities, emphasizing the importance of personalization and flexibility in the educational process.



Each module is designed to provide an in-depth and practical understanding of the topics covered, allowing trainees to apply the knowledge gained in real educational contexts. Upon completion of each module, participants receive a certificate of completion, validating the skills and knowledge developed during their training course at i-HETP.





Co-funded by
the European Union

STRUCTURE AND CERTIFICATION

The i-HETP program is distinguished by its flexible modular structure, designed to adapt to the individual needs and preferences of trainees. In addition to the possibility of enrolment in isolated modules, the program offers structured training pathways, which combine multiple modules to provide an integrated understanding of specific topics within the framework of inclusive education.

Training Paths

The training pathways are carefully selected sets of modules to provide a comprehensive overview of the practices and theories related to the education of students with different types of disabilities. Each training path includes Modules 1 and 2 – essential for understanding inclusive pedagogy and universal design for learning – followed by one of modules 3 to 7, specializing in pedagogical methodologies for specific groups of students with disabilities.

Upon completing the set of modules of a training pathway, participants are awarded a certificate of completion of the pathway, which attests to the acquisition of knowledge and skills in a specific area of inclusive education.

Modular Certification

Each module of the i-HETP program is a complete training unit in itself, addressing specific topics within the broad domain of inclusive education. At the end of a module, participants receive a modular certificate of completion, which validates the skills acquired and can be a valuable addition to their ongoing professional development.

One of the key principles of i-HETP is flexibility, allowing trainees to progress through the modules and training pathways at their own pace. This approach respects the diverse circumstances and commitments of the participants, offering a learning opportunity tailored to their professional and personal lives.





Co-funded by
the European Union



There are no stipulated deadlines for completing modules or training pathways, giving participants the freedom to plan their training according to their schedules and learning paces. Such flexibility is especially relevant in the context of adult education, where trainees often balance multiple responsibilities.

By providing a modular structure, integrated training pathways and flexible certification, i-HETP positions itself as an innovative and inclusive program aimed at promoting excellence and inclusion in higher education.





Co-funded by
the European Union

BENEFITS AND IMPACT

The i-HETP Inclusive Higher Education Training Program is a pioneering initiative that combines theory and practice, providing tangible benefits for both the program participants and the wider education community. Its flexible structure and comprehensive content are intended to foster a positive transformation in higher education by promoting inclusion and accessibility.

Benefits for Participants

Trainees in the i-HETP program benefit from in-depth and diversified training in inclusive pedagogy, acquiring key competences that enable them to respond effectively to the needs of the student population. The knowledge acquired in the various modules prepares them to implement innovative pedagogical strategies, promoting more inclusive and accessible learning environments. In addition, the certification obtained at the end of each module or training path is a valuable recognition of your professional development, enriching your CV and expanding your career opportunities.

Impact on Higher Education

Inclusive education is a key pillar for the development of fairer and more equitable societies. By empowering educators, managers, and higher education professionals with skills in inclusive pedagogy, i-HETP contributes significantly to the transformation of educational institutions, making them more open and accessible to the entire student population, regardless of their individual needs. This impact is not restricted to classrooms; It reverberates throughout the academic community, promoting a culture of inclusion and respect for diversity.





Co-funded by
the European Union

Contributions to Society

The commitment to inclusive education is reflected not only in academia but also in society at large. Professionals trained by i-HETP are equipped to be agents of change, encouraging inclusive practices in diverse social and professional contexts. In the long term, the program contributes to building a more informed, inclusive society that is aware of the potential and challenges associated with diversity.

The i-HETP project not only aims to empower participants with knowledge and skills in inclusive pedagogy, but also sows the foundations for a sustainable and inclusive evolution in higher education, benefiting society as a whole.





Co-funded by
the European Union

TEAM & PARTNERSHIPS

i-HETP has the support of universities, research centers, NGOs and Small and Medium Enterprises in Portugal, Spain, Italy, Czech Republic, Poland, Romania, and Turkey. These institutions contribute not only with educational resources, but also with specific expertise in different areas of inclusion and accessibility. The diversity of partner institutions allows for a rich and multifaceted approach to inclusive education, facilitating an exchange of knowledge and practices that transcend geographical and cultural boundaries.

Collaborative Impact

The synergy between the project's various partner organizations ensures that i-HETP remains at the forefront of inclusive education, promoting pedagogical innovations that are both effective and transformative. International collaboration not only strengthens the program but also fosters a spirit of community and cooperation that is essential to the success of global educational initiatives.



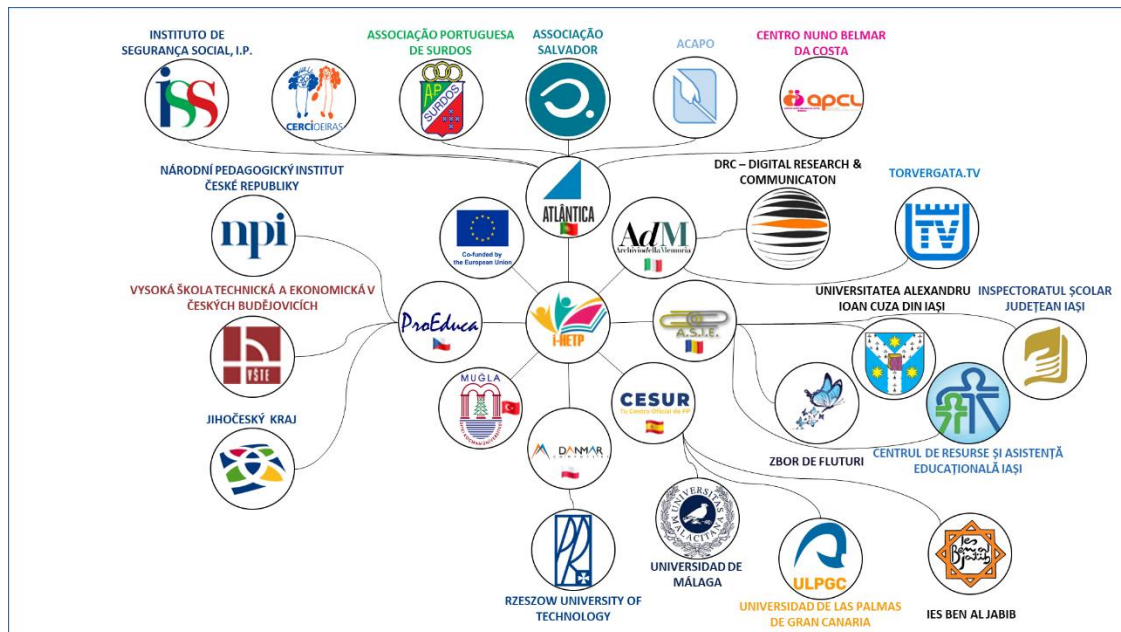


Co-funded by the European Union

External Entities

The project also had the collaboration of important representatives from various sectors of society, attracting the collaboration of entities that make inclusion their model and social focus. The training program is the result of a process of active listening to the advice and recommendations of these organizations and individuals who have contributed with their knowledge and experience to the exhaustive survey of the needs to be met by teaching staff and non-teaching professionals in higher education.

By integrating knowledge and skills from a diverse and highly qualified team, i-HETP stands out as an innovative training program for inclusion in higher education, setting high standards of academic excellence and social impact.



i-HETP Social Network





Co-funded by
the European Union

HOW TO PARTICIPATE

The i-HETP Inclusive Higher Education Training Program offers a unique opportunity for any higher education professional who wishes to deepen their knowledge and skills in inclusive pedagogy and digital accessibility. The process of applying for and participating in the program is designed to be as accessible and flexible as the course content itself.

Registration on the Platform

To start your i-HETP learning journey, the first step is to register on the online platform. This process is simple and can be completed in a few minutes. All you must do is go to the official website of the program, <https://ihetp.org>, provide the requested information and create a user account. After confirming the registration, you will have full access to the features and modules offered.

The Curriculum

The Program consists of 7 modules:

- Introduction to Inclusive Pedagogy and Digital Accessibility
- Universal Design for Learning
- Pedagogical Methodologies for Students with Visual Impairment
- Pedagogical Methodologies for Students with Hearing and/or Speech Disabilities
- Pedagogical Methodologies for Students with Physical Disabilities
- Pedagogical Methodologies for Students with Intellectual and/or Specific Learning Disabilities
- Pedagogical Methodologies for Students with Other Disabilities

Get to know them in more detail by downloading our [curriculum](#).





Module Enrollment

Once registered, you will be able to browse through the list of available modules and select the ones that interest you the most or that are necessary for your professional development. Enrolment in the modules is completely autonomous, allowing you to choose only those you wish to attend. There is no limit to the number of modules you can select from, giving you complete freedom to shape your educational path to your needs and interests.

Learning Flexibility

i-HETP is designed to adapt completely to your pace and availability. There are no fixed deadlines for completing the modules, which means you can progress through the courseware at your convenience. This flexibility is ideal for professionals with busy schedules, students and anyone who has to juggle training with other responsibilities.

Support Resources

The i-HETP platform offers a variety of support resources to assist in the learning process. This includes learning materials, videos, case studies, and discussion forums where you can interact with other participants and tutors. These resources are designed to enrich your learning experience and provide the support you need to maximize your development.

Continuity and Certification

Upon completion of each module, a certificate of completion will be issued acknowledging the skills acquired. These certificates are a testament to your commitment and dedication to professional improvement, as well as contributing to your career growth.

i-HETP is committed to keeping the platform and content available in the long term, ensuring that educational resources remain accessible even after



the end of the life cycle of the Erasmus+ KA2 project that facilitated their creation.

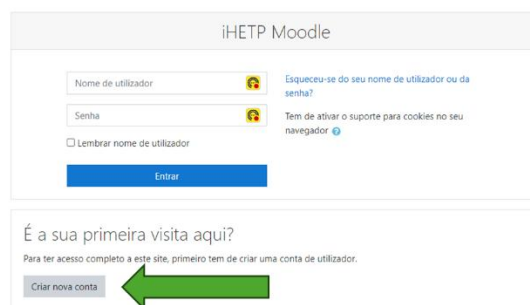
Starting your training at i-HETP is an important step towards becoming a more qualified professional and aware of the needs of inclusion in higher education. We encourage all interested people to register and start exploring the wide world of inclusive pedagogy offered by the program.

Register now!

Go to the [Learning Platform page](#), and simply click on the "Create New Account" button.

Choose a username, a password, an email, and indicate the first and last name as they should appear on your certificates.

You will receive a confirmation email at the address you have provided to us, and after clicking on the confirmation link in that message, you will have full access to the training program, for as long as you need.



Registration screen on the learning platform

THE PROJECT WEBSITE



<https://ihetp.org>

CONTACTS

GENERAL EMAIL: info@ihetp.org

SOCIAL MEDIA



Co-funded by
the European Union

Funded by the European Union. Views and opinions expressed are however those of the author(s) only and do not necessarily reflect those of the European Union or the European Education and Culture Executive Agency (EACEA). Neither the European Union nor EACEA can be held responsible for them.